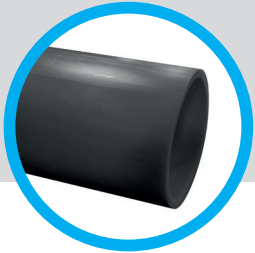


PRODUCT DATA SHEET



**Black pipe for the conveyance of Non Potable Water (DIN)
(63 – 630mm in diameter)**

RANGE / PRESSURE RATING


SDR	Pressure rating	Material
11	12.5 bar (PN 12.5)	PE80
17	8 bar (PN 8)	PE80
17.6	7.5 bar (PN 7.5)	PE80
21	6 bar (PN 6)	PE80
26	5 bar (PN 5)	PE80

(Other pressure ratings / SDRs may be produced on request)

**PE-HD designates
Non-pressure**

SDR	Pressure rating	Material
11	16 bar (PN 16)	P100
17	10 bar (PN 10)	P100
17.6	9.5 bar (PN 9.5)	P100
21	8 bar (PN 8)	P100
26	6 bar (PN 6)	P100

COLOUR

Material	Colour
PE80 or PE100	Black 

SPECIFICATIONS

DIN 8074:2011

**Polyethylene (PE) Pipes PE 80,
PE 100 – Dimensions**

DIN 8075:1999

**Polyethylene (PE) Pipes - PE 80,
PE 100 – General Quality
Requirements, Testing**

LENGTHS

Pipes ≤ 180mm diameter will be supplied in lengths of 6 or 12m or coil lengths of 50m, 75m, 100, 150m

Pipes ≥ 180mm diameter will be supplied in standard lengths of 6, 12 or 18m (Other lengths maybe produced at customer's request)

(Other lengths maybe produced at customer's request)

WEIGHTS

All weights (Equivalent pipe) are published in GPS Product Guide DP001.

DIMENSIONS

All dimensions are in accordance with DIN 8074.

MARKINGS

Product will be marked on one side with characters at least 5mm high in a contrasting colour

The following identification and traceability marks will be printed once every metre;

- Manufacturers identification: **GPS**
- Standard number: **DIN 8074 (see note 1)**
- Material designation: **PE100 or PE80 or PE-HD (see note 2)**
- SDR: **SDR 11 (example)**
- Outside diameter: **250mm (example)**
- Manufacturing code: **(Contains date) (see note 3)**

Identification Marking

Note 1: The use of this mark is GPS's claim that the product has been manufactured in accordance with DIN 8074

Note 2: The material code is specified in Works instruction and maybe suffixed as follows: R = 100% rework material

Note 3: The shift code denotes the extruder, shift week and year of manufacture plus the plant identification code. Each item being allocated a maximum of 2 digits. Where the codes numerical value is less than 10 a 0 is inserted. Or a simple date code may be used DD/MM/YY.

BATCH NUMBER FORMAT

8 Digit Code	Extruder Number 1 & 2	Shift Number 3 & 4	Week Number 5 & 6	Year 7 & 8
	01-23	01 - 14	01 - 52	01-99