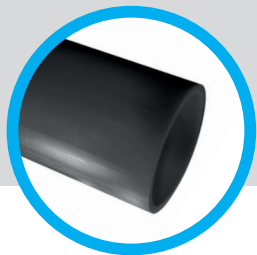


# PE100 GEOTHERMAL PIPE

## PRODUCT DATA SHEET



Black pipe for below ground geothermal applications

### RANGE / PRESSURE RATING

OD (mm)	SDR	Pressure rating	Material
32 & 40mm	11	16 bar	PE100

Other pressure ratings / SDRs may be produced on request.

### COLOUR

Material	Colour
PE100	Black 

### STANDARDS / APPROVALS

**BS EN 12201-2**  
(BSI Kitemark Certificate  
KM 508224)

### LENGTHS

Pipes will be supplied in coil lengths of 50, 100, 150m.

### MARKINGS

Product will be marked on one side with characters at least 3mm high.

Note: Two types of marking maybe used, either "Hot foil impression" to a depth of 0.02mm – 0.15mm or "Inkjet printing".  
(Marking to be in blue or white)

The following identification and traceability marks should be printed once every metre;

- GPS (Manufacturers identification)
- Nominal size
- mm
- SDR
- PE100
- Pressure rating (bar)
- Geothermal Heat Collector pipe
- Material code (*see note 1*)
- DD/MM/YY
- Shift code (*see note 3*)
- Metre marker
- BS EN 12201-2 (*see note 2*)

#### Identification Marking

Note 1: The material code is specified in Works instruction and maybe suffixed as follows: R = 100% rework material

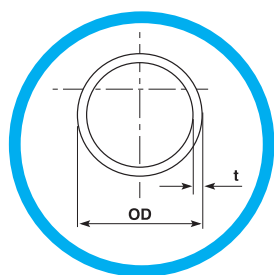
Note 2: The use of this mark is GPS's claim that the product has been manufactured in accordance with BS EN 12201-2

Note 3: The shift code denotes the extruder, shift week and year of manufacture plus the plant identification code.  
Each item being allocated a maximum of 2 digits. Where the codes numerical value is less than 10 a 0 is inserted.  
Or a simple date code may be used DD/MM/YY

**BATCH NUMBER FORMAT**

8 Digit Code	Extruder Number 1 & 2	Shift Number 3 & 4	Week Number 5 & 6	Year 7 & 8
	01-23	01 - 14	01 - 52	01-99

**PIPE DIMENSIONS –  
WATER APPLICATIONS  
(BS EN 12201-2)**



SDR 11					
Nom. Size (mm) DN / OD	Max OD (mm)	Min t (mm)	Max t (mm)	Mean Weight (kg/m)	Mean Bore (mm)
32	32.3	3.0	3.4	0.3	25.8
40	40.4	3.7	4.2	0.4	32.3

GPS pipes, manufactured to BS EN 12201-2 standard, are capable of withstanding transient surge pressures of up to twice the rated pressure of the pipe.