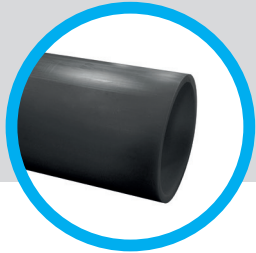


# PE80 BLACK PIPE

## PRODUCT DATA SHEET



PE80 Black pipe is used for transporting non-potable water, industrial or general/waste applications.

### RANGE / PRESSURE RATING

OD (mm)	SDR	Pressure rating	Material
20mm	9	16 bar	PE80
25 - 63mm	11	12.5 bar	PE80

Other pressure ratings / SDRs may be produced on request.

### COLOUR

Material	Colour
PE80	Black 

### STANDARDS / APPROVALS

**BS EN 12201-2**  
(BSI Kitemark Certificate  
KM 508224)

The Water  
Supply Regulation  
31/27/30

### LENGTHS

Pipes  $\leq$  180mm in diameter are available in coil lengths of 50, 75, 100, 150m, or lengths of 6 or 12m.

### MARKINGS

Products are marked on one side with characters at least 3mm high.

The following identification and traceability marks are printed once every metre;

- |  |   |
|--|---|
| ■ Manufacturers identification: <b>GPS</b>           | ■ Outside diameter: <b>250mm (example)</b>                |
| ■ Material designation: <b>PE80 (see note 1)</b>     | ■ Manufacturing code: <b>(Contains date) (see note 3)</b> |
| ■ Standard number: <b>BS EN 12201-2 (see note 2)</b> | ■ Application: <b>Water</b>                               |
| ■ SDR value: <b>SDR 11 (example)</b>                 | ■ Pressure Rating <b>eg. 16 bar</b>                       |

#### Identification Marking

*Note 1:* The material code is specified in Works instruction and maybe suffixed as follows: R = 100% rework material

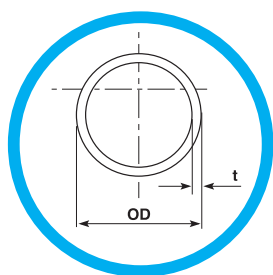
*Note 2:* The use of this mark is GPS's claim that the product has been manufactured in accordance with BS EN 12201-2

*Note 3:* The shift code denotes the extruder, shift week and year of manufacture plus the plant identification code. Each item being allocated a maximum of 2 digits. Where the codes numerical value is less than 10 a 0 is inserted. Or a simple date code may be used DD/MM/YY

**BATCH NUMBER FORMAT**

8 Digit Code	Extruder Number 1 & 2	Shift Number 3 & 4	Week Number 5 & 6	Year 7 & 8
	01-23	01 - 14	01 - 52	01-99

**PIPE DIMENSIONS –  
WATER APPLICATIONS  
(BS EN 12201-2)**



SDR 11					
Nom. Size (mm) DN / OD	Max OD (mm)	Min t (mm)	Max t (mm)	Mean Weight (kg/m)	Mean Bore (mm)
20*	20.3	2.3	2.7	0.1	15.2
25	25.3	2.3	2.7	0.2	20.2
32	32.3	3.0	3.4	0.3	25.8
40	40.4	3.7	4.2	0.4	32.3
50	50.4	4.6	5.2	0.7	40.4
63	63.4	5.8	6.5	1.0	50.9

\* SDR 9 only. Wall thickness increased to give a lower SDR and more resistance to damage.  
GPS pipes, manufactured to BS EN 12201-2 standard, are capable of withstanding transient surge pressures of up to twice the rated pressure of the pipe.