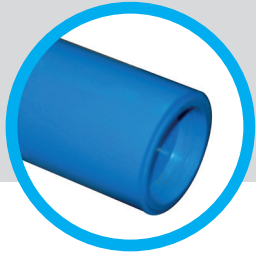


# PE80 BLUE PIPE

## PRODUCT DATA SHEET




PE80 Blue Pipe is used for potable water supply below ground.

### RANGE / PRESSURE RATING

OD (mm)	SDR	Pressure rating	Material
20mm	9	16 bar	PE80
25 - 63mm	11	12.5 bar	PE80

Other pressure ratings / SDRs may be produced on request.

### COLOUR

Material	Colour
PE80	<b>Blue:</b> Within colour range 18E51 to 18E53 (BS5252: 1976) 

### STANDARDS / APPROVALS

**BS EN 12201-2**  
(BSI Kitemark Certificate  
KM 508224)

**The Water  
Supply Regulation  
31/27/30**

### LENGTHS

Pipes are available in coil lengths of 25m, 50m, 100m, 150m. Pipe 63mm in diameter is also available in straight length of 6m.

Other lengths may be produced on request.

### MARKINGS

Products are marked on one side with characters at least 3mm high in a contrasting colour

The following identification and traceability marks are printed once every metre;

- Manufacturers identification: **GPS**
- Material designation: **PE80 (see note 1)**
- Standard number: **BS EN 12201-2 (see note 2)**
- SDR value: **SDR11 (example)**
- Outside diameter: **32mm (example)**
- Manufacturing code: **(Contains date) (see note 3)**
- Application: **Water**
- Pressure Rating: **eg. 16 bar**

#### Identification Marking

*Note 1:* The material code is specified in Works instruction and maybe suffixed as follows: R = 100% rework material

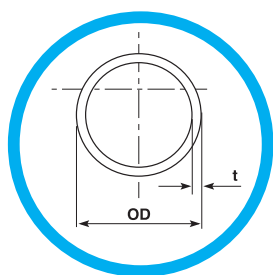
*Note 2:* The use of this mark is GPS's claim that the product has been manufactured in accordance with BS EN 12201-2

*Note 3:* The shift code denotes the extruder, shift week and year of manufacture plus the plant identification code. Each item being allocated a maximum of 2 digits. Where the codes numerical value is less than 10 a 0 is inserted. Or a simple date code may be used DD/MM/YY

**BATCH NUMBER FORMAT**

8 Digit Code	Extruder Number 1 & 2	Shift Number 3 & 4	Week Number 5 & 6	Year 7 & 8
	01-23	01 - 14	01 - 52	01-99

**PIPE DIMENSIONS –  
WATER APPLICATIONS  
(BS EN 12201-2)**



SDR 11					
Nom. Size (mm) DN / OD	Max OD (mm)	Min t (mm)	Max t (mm)	Mean Weight (kg/m)	Mean Bore (mm)
20*	20.3	2.3	2.7	0.1	15.2
25	25.3	2.3	2.7	0.2	20.2
32	32.3	3.0	3.4	0.3	25.8
40	40.4	3.7	4.2	0.4	32.3
50	50.4	4.6	5.2	0.7	40.4
63	63.4	5.8	6.5	1.0	50.9

\* SDR 9 only. Wall thickness increased to give a lower SDR and more resistance to damage.  
GPS pipes, manufactured to BS EN 12201-2 standard, are capable of withstanding transient surge pressures of up to twice the rated pressure of the pipe.