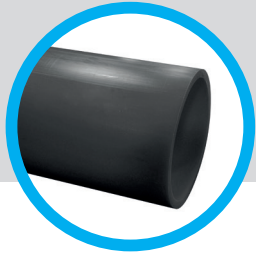


ELECTRICAL CABLE DUCTING

PRODUCT DATA SHEET




Electric Cable Ducting (ECD)
(90mm – 180mm)

RANGE

OD (mm)	SDR
90mm	17.6
110mm	17.6
125mm	17.6
125mm	11
180mm	11

All ECD produced will be in SDR11 or SDR17.6

COLOUR

Material	Colour
The following materials will be used in accordance with the manufacturer's technical specification: PE80 and PE100 Pipe grade materials reclassified as PE-HD	Black 

(Reprocessed material derived from product manufactured on the GPS site may be used).

SPECIFICATIONS

ISO 6259-3 (1997)

ISO 11357-6

LENGTHS

All "Sticks" are supplied in 6 and 12 metres in length.

All coils are supplied in 50 or 100 metres in length.

WEIGHTS

All weights are published in GPS Product Guide DPO01.

DIMENSIONS

All dimensions are in accordance with tables 1 & 2 of BS EN 12201-2 2003(E)

MARKINGS

Product will be marked on one side with characters at least 5mm high in a contrasting colour.

The following identification and traceability marks will be printed once every metre;

- Manufacturers identification: **GPS**
- Material designation: **PE100 (see note 1)**
- Danger **Electrical Cable Ducting**
- SDR value: **SDR 17.6 (example)**
- Outside diameter: **250mm (example)**
- Manufacturing code: **(Contains date) (see note 3)**

Identification Marking

Note 1: The material code is specified in Works instruction and maybe suffixed as follows: R = 100% rework material

Note 2: The shift code denotes the extruder, shift week and year of manufacture plus the plant identification code. Each item being allocated a maximum of 2 digits. Where the codes numerical value is less than 10 a 0 is inserted. Or a simple date code may be used DD/MM/YY

SHIFT CODE FORMAT

8 Digit Code	Extruder Number 1&2	Shift Number 3&4	Week Number 5&6	Year 7&8
	01-23	01 - 14	01 - 52	01-99